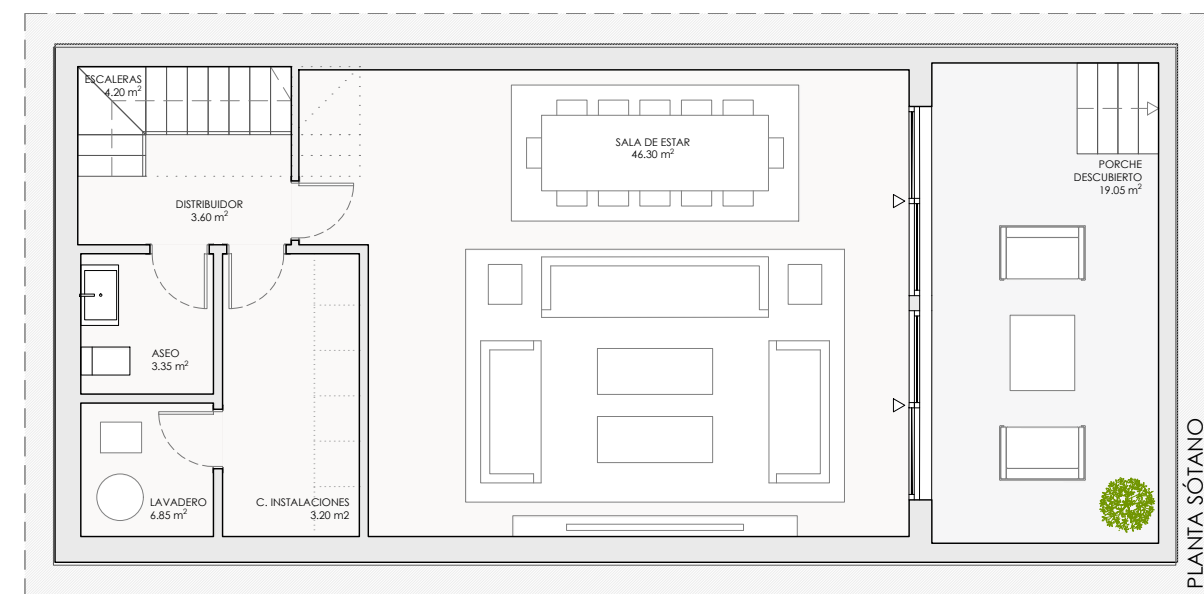
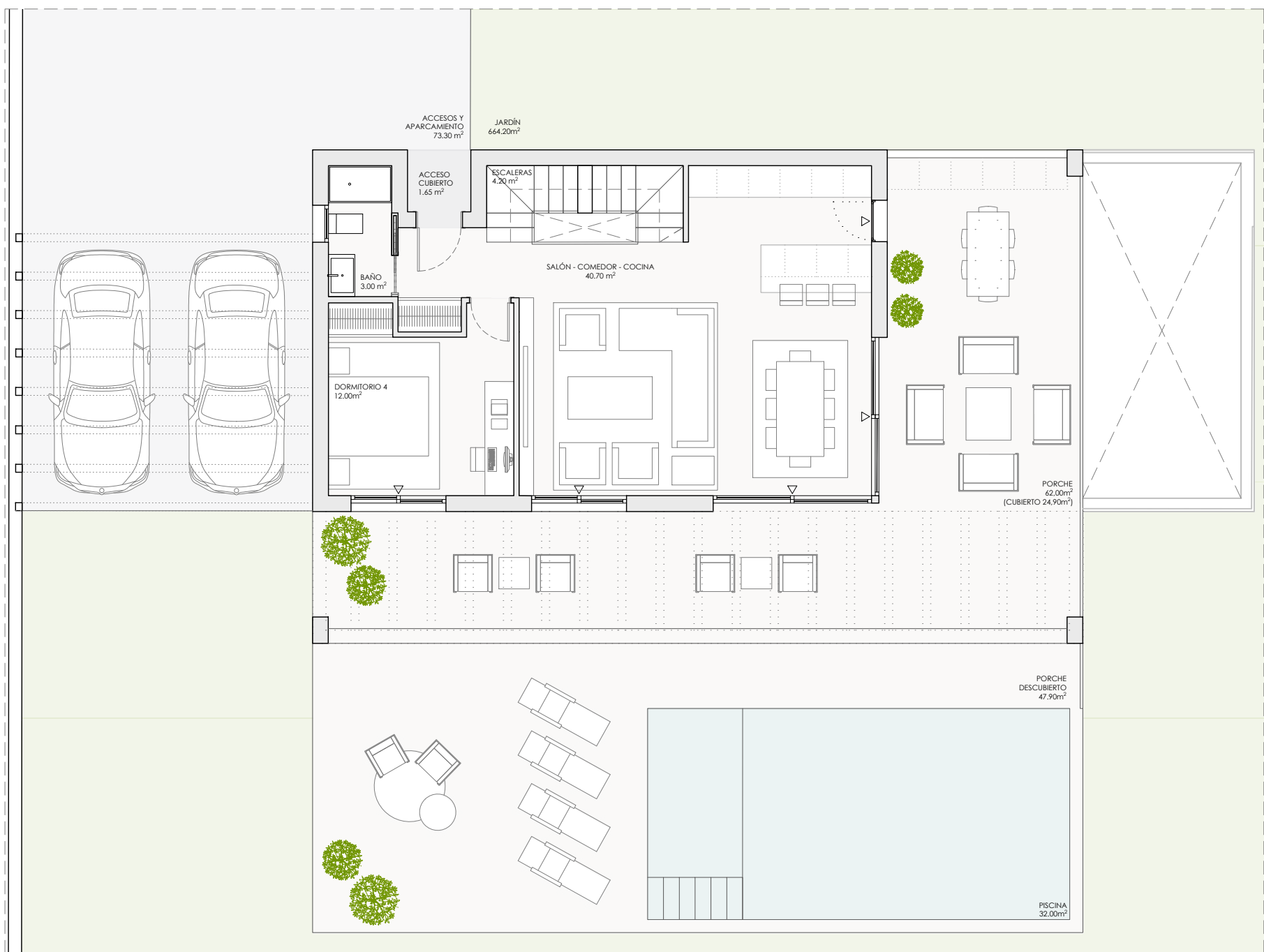


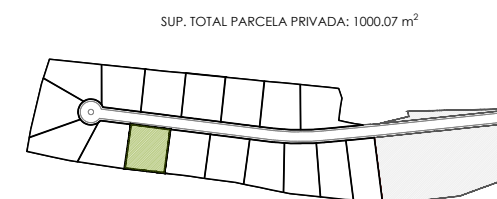
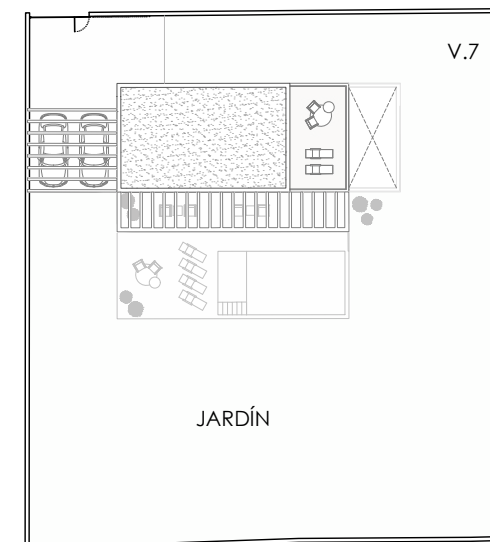
PLANTA PRIMERA



PLANTA SÓTANO



PLANTA BAJA (TIPO A)



V07

A

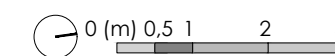
RESUMEN SUPERFICIES ÚTILES

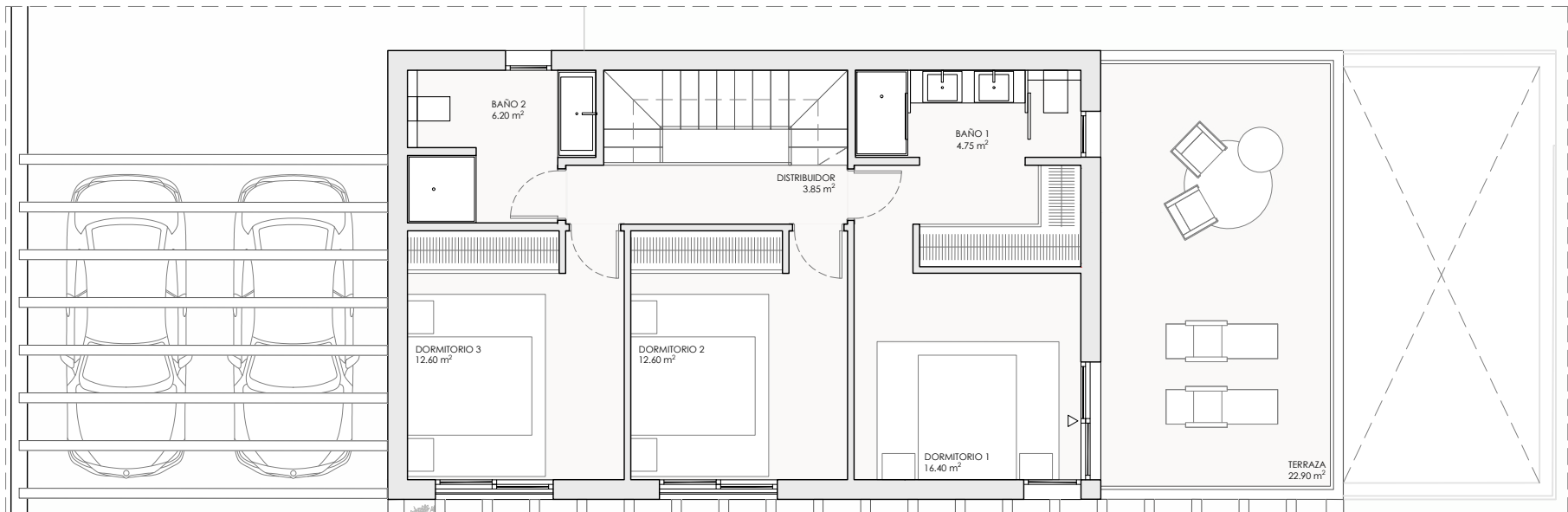
| | |
|---|-----------------------|
| Total superficie útil interior | 183.80 m ² |
| Total superficie útil exterior | 105.60 m ² |
| (acceso y porche cubierto, porche pergolado, terraza y porche sótano) | |
| Total superficie útil vivienda | 289.40 m ² |

RESUMEN SUPERFICIES CONSTRUIDAS

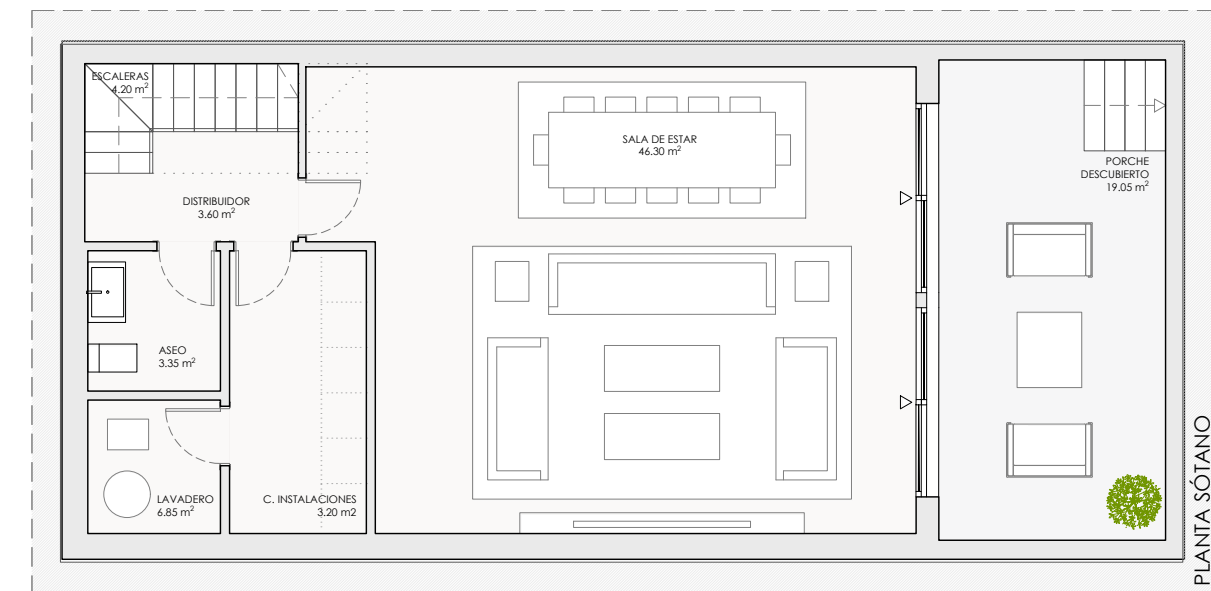
| | |
|--------------------------------------|-----------------------|
| Total superficie construida interior | 227.31 m ² |
| Total superficie construida exterior | 188.31 m ² |
| Total superficie construida vivienda | 415.62 m ² |

| | |
|-----------------------|-----------------------|
| Total acceso exterior | 47.40 m ² |
| Jardín | 684.54 m ² |
| Piscina | 32.00 m ² |

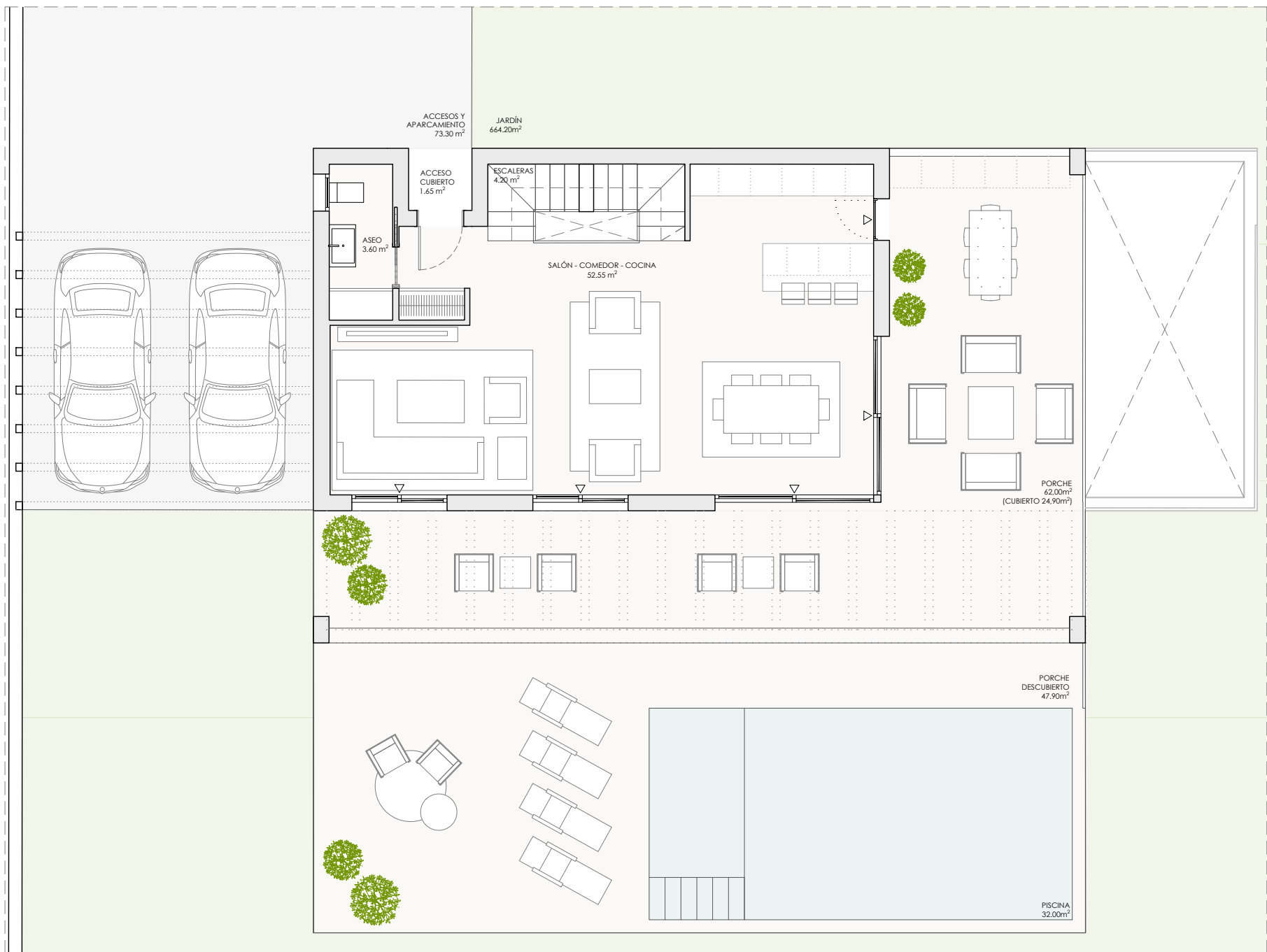




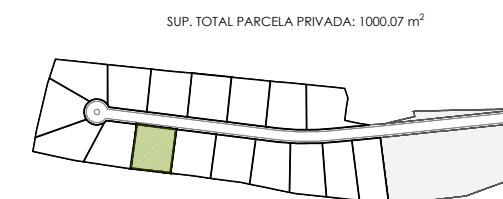
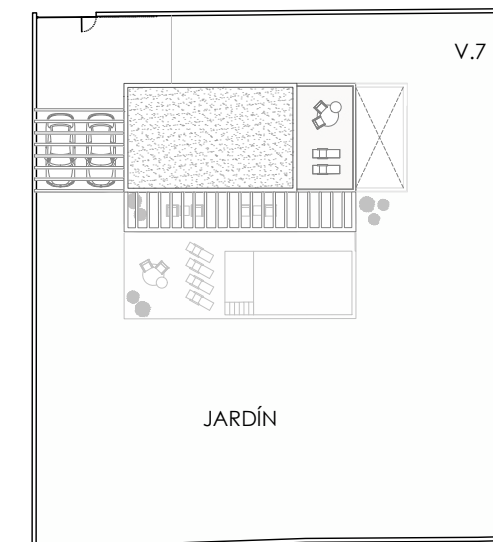
PLANTA PRIMERA



PLANTA SÓTANO



PLANTA BAJA (TIPO A)



V07

B

RESUMEN SUPERFICIES ÚTILES

| | |
|---|------------------|
| Total superficie útil interior | 183.80 m² |
| Total superficie útil exterior (acceso y porche cubierto, porche pergolado, terrazza y porche sótano) | 105.60 m² |
| Total superficie útil vivienda | 289.40 m² |

RESUMEN SUPERFICIES CONSTRUIDAS

| | |
|---|------------------|
| Total superficie construida interior | 227.31 m² |
| Total superficie construida exterior | 188.31 m² |
| Total superficie construida vivienda | 415.62 m² |

| | |
|-----------------------|-----------|
| Total acceso exterior | 47.40 m² |
| Jardín | 684.54 m² |
| Piscina | 32.00 m² |